

# State of Wyoming Corner Record

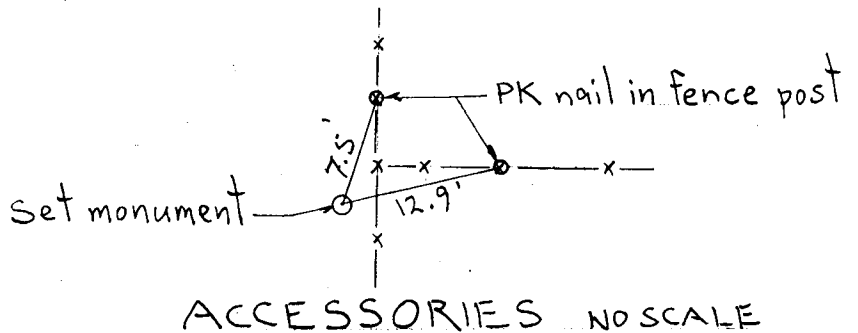
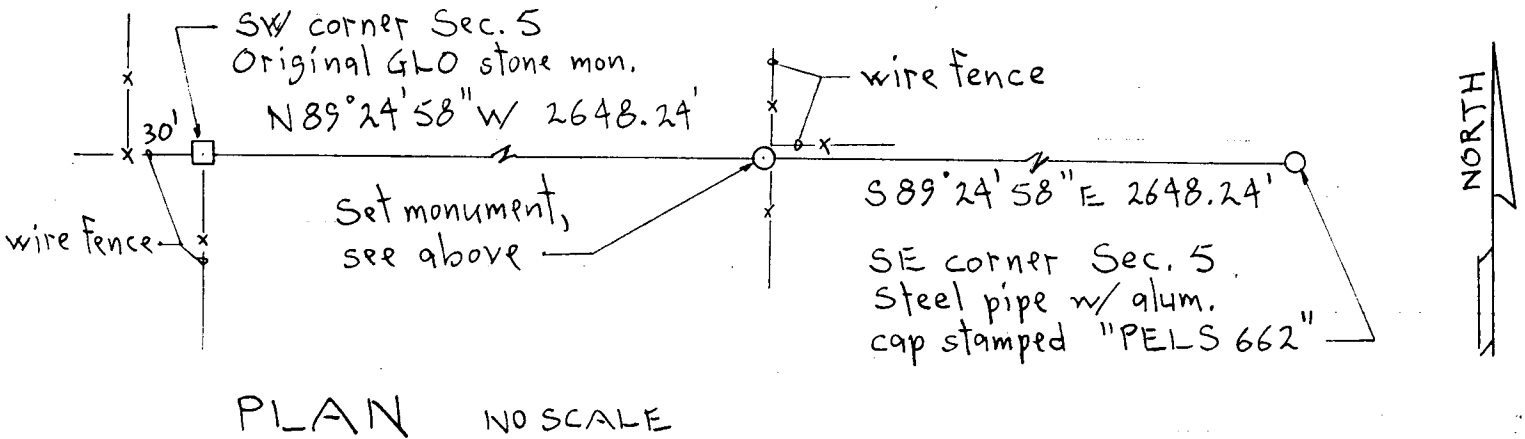
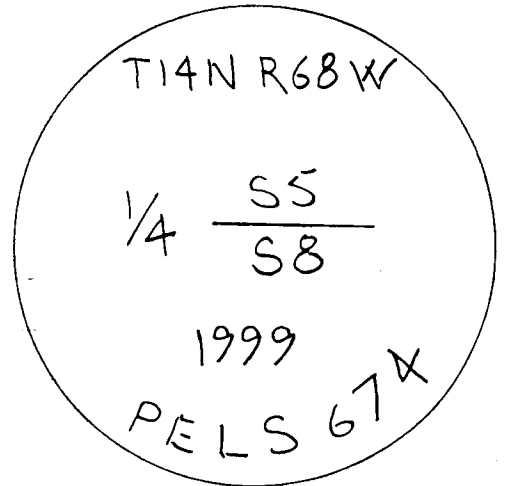
(In compliance with the CORNER PERPETUATION AND FILING ACT, Wyoming Statutes, 1977, Section 36-11-101, et. seq., and the Rules and Regulations of the Board of Registration for Professional Engineers and Professional Land Surveyors)

Reverse side of this form may be used if more space is needed.

Record of original survey and citation of source of historical information (if corner is lost or obliterated). Description of corner monumentation evidence found and/or monument and accessories established to perpetuate the location of this corner. Sketch of relative location of monument, accessories, and reference points with course and distance to adjacent corner(s) (if determined in this survey). Method and rationale for reestablishment of lost or obliterated corner.

Found no evidence of the original GLO monument, a granite boulder 14x9x7.

Set 3/4"  $\phi$  rebar w/ 2 1/2"  $\phi$  alum. survey cap stamped as shown:



Date of Field Work: May 20, 1999 Office Reference: Romsa Sec 5

### CROSS INDEX DIAGRAM

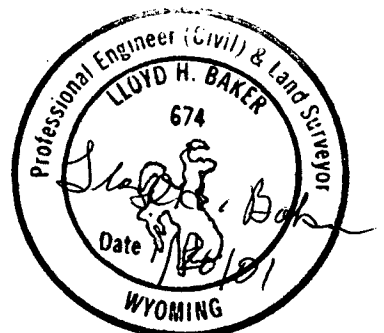
1	2	3	4	5	6	7	8	9	10	11	12	13	14	15	16	17	18	19	20	21	22	23	24	25	
A																									A
B																									B
C	6		5																						C
D																									D
E																									E
F																									F
G	7		8																						G
H																									H
I																									I
J																									J
K																									K
L	13		17																						L
M																									M
N																									N
O																									O
P	19		20																						P
Q																									Q
R																									R
S																									S
T	30		29																						T
U																									U
V																									V
W																									W
X	31		32																						X
Y																									Y
Z																									Z

Firm/Agency, Address

Lloyd H. Baker  
Gertsch/Baker & Assoc.  
215 S. 3rd St., suite 110  
Laramie, WY 82070  
 Telephone Number: 307 742-6116

This corner record was prepared by me or under my direction and supervision.

SEAL & SIGNATURE



RECORDED 2/07/2001 AT 10:36 AM REC# 288650 BK# 1578 PG# 239  
 DEBRA K. LATHROP, CLERK OF LARAMIE COUNTY, WY PAGE 1 OF 1

Corner Name: S 1/4 Sec. 5 Section: 5 T 14N R 68W; 6 1/2 P.M. Cross-Index No.: E7  
 SBRPEPLS/PLSW: March 1994